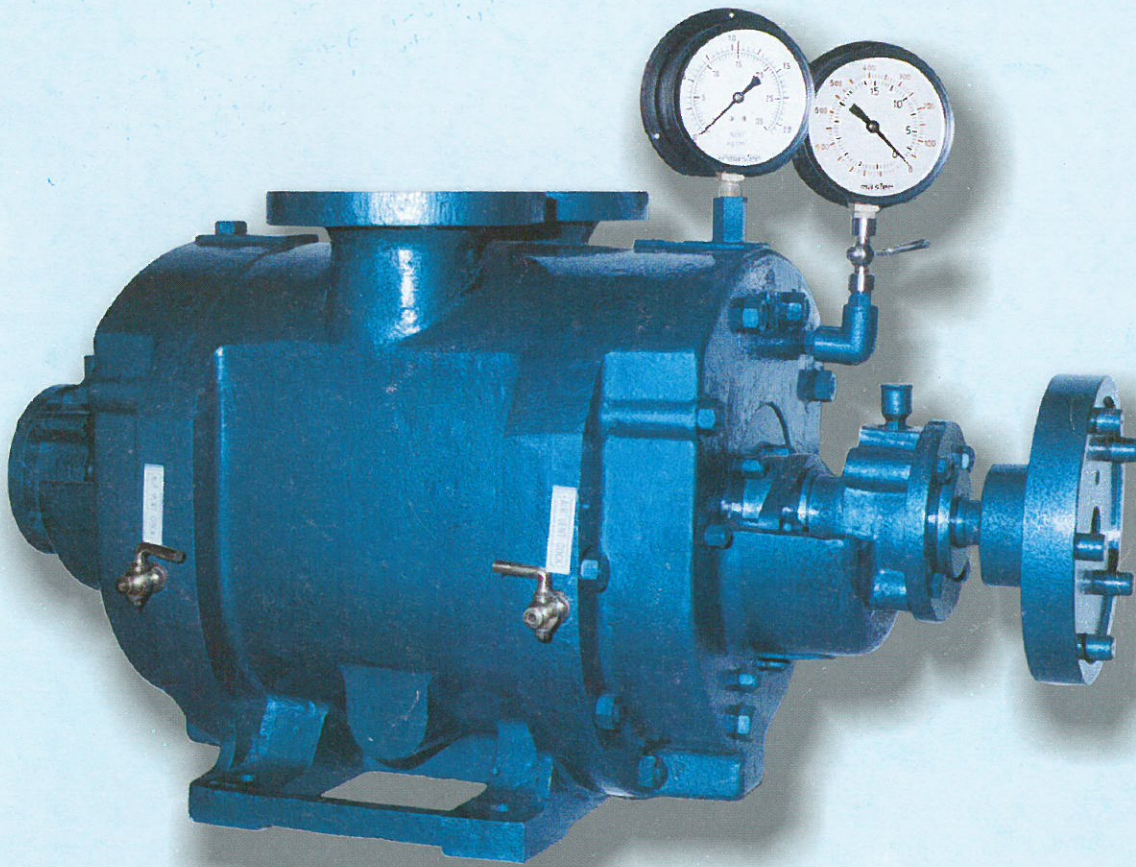


# RAVI



LIQUID RING VACUUM  
PUMPS/COMPRESSORS

## Introducing...

An improved concept in LIQUID RING TECHNOLOGY developed by highly technical and experienced engineers solely engaged in manufacturing of VACUUM PUMPS, labelled RAVI. These pumps are designed to handle air, gas, vapours also with liquid parts in suspension. They are used in Chemical, Pharmaceuticals, Food Processing, Textile, Oil, Solvent, Sugar, and Paper industries, and wherever there is a need for evaporation, drying, pulverization, or impregnation under vacuum.

## Assured Quality

RAVI pumps are tested as per BS 726/1571 for listed capacity. All pumps are guaranteed for about 12 months of trouble-free operation and defective parts.

## Wide Choice of Material Like

Complete Cast Iron

Partial Ph. Bronze

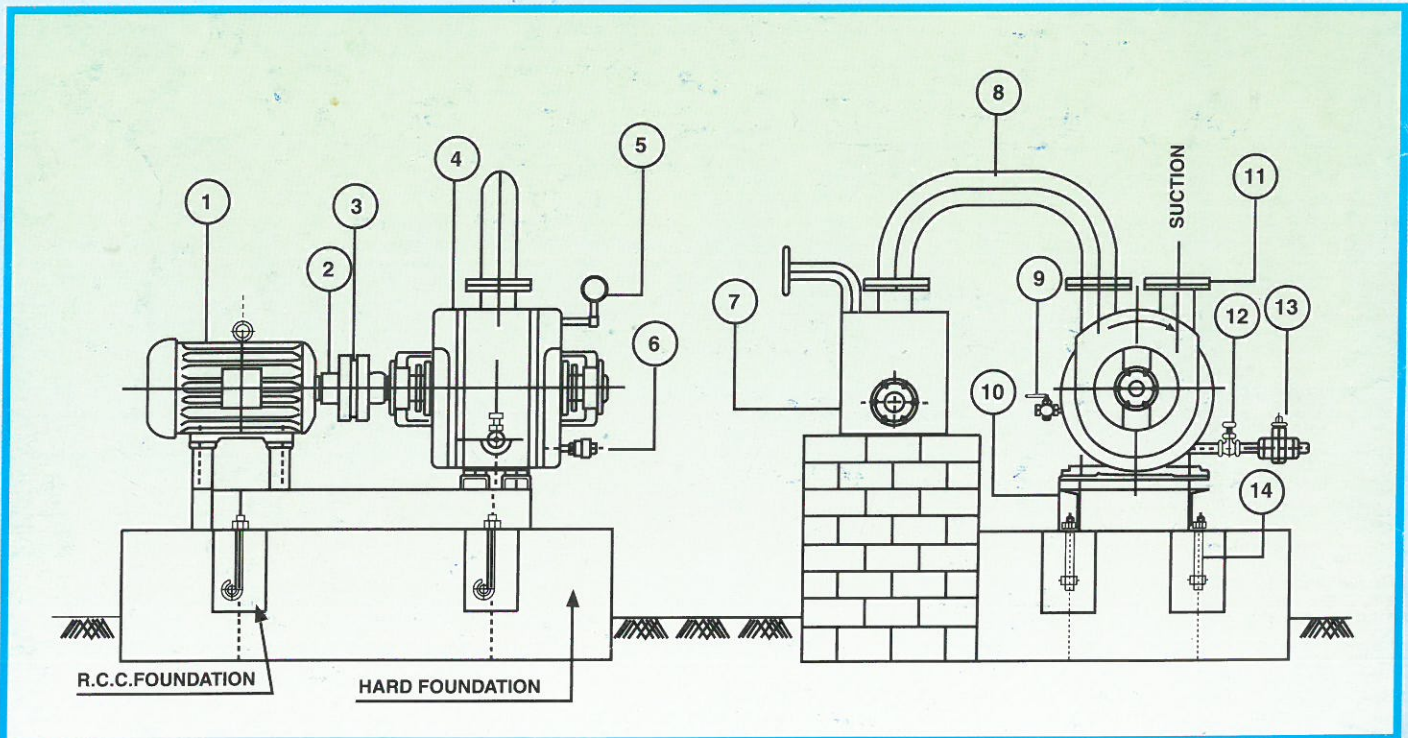
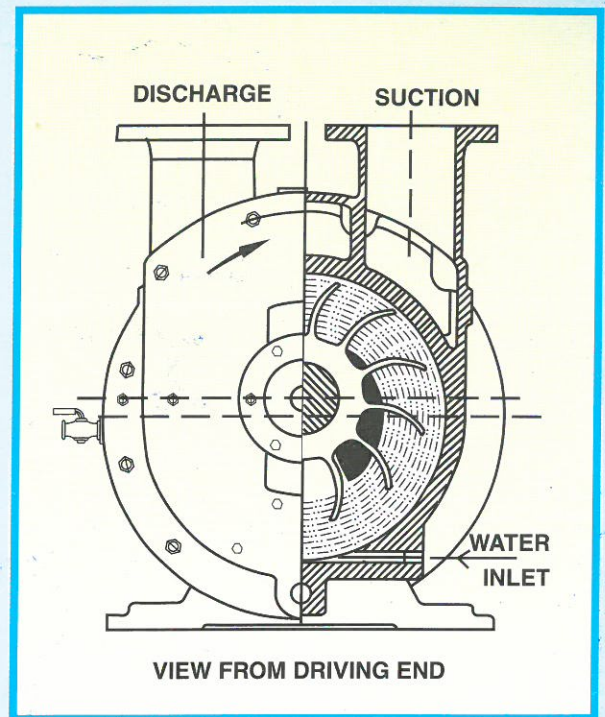
Complete Ph. Bronze

Partial SS-316

Complete SS-316/Partial SS-316 with **ss sleeve** in casing.

Cast Iron with Rubber Lining

Other materials also available as per customer's requirements.



### No. Description

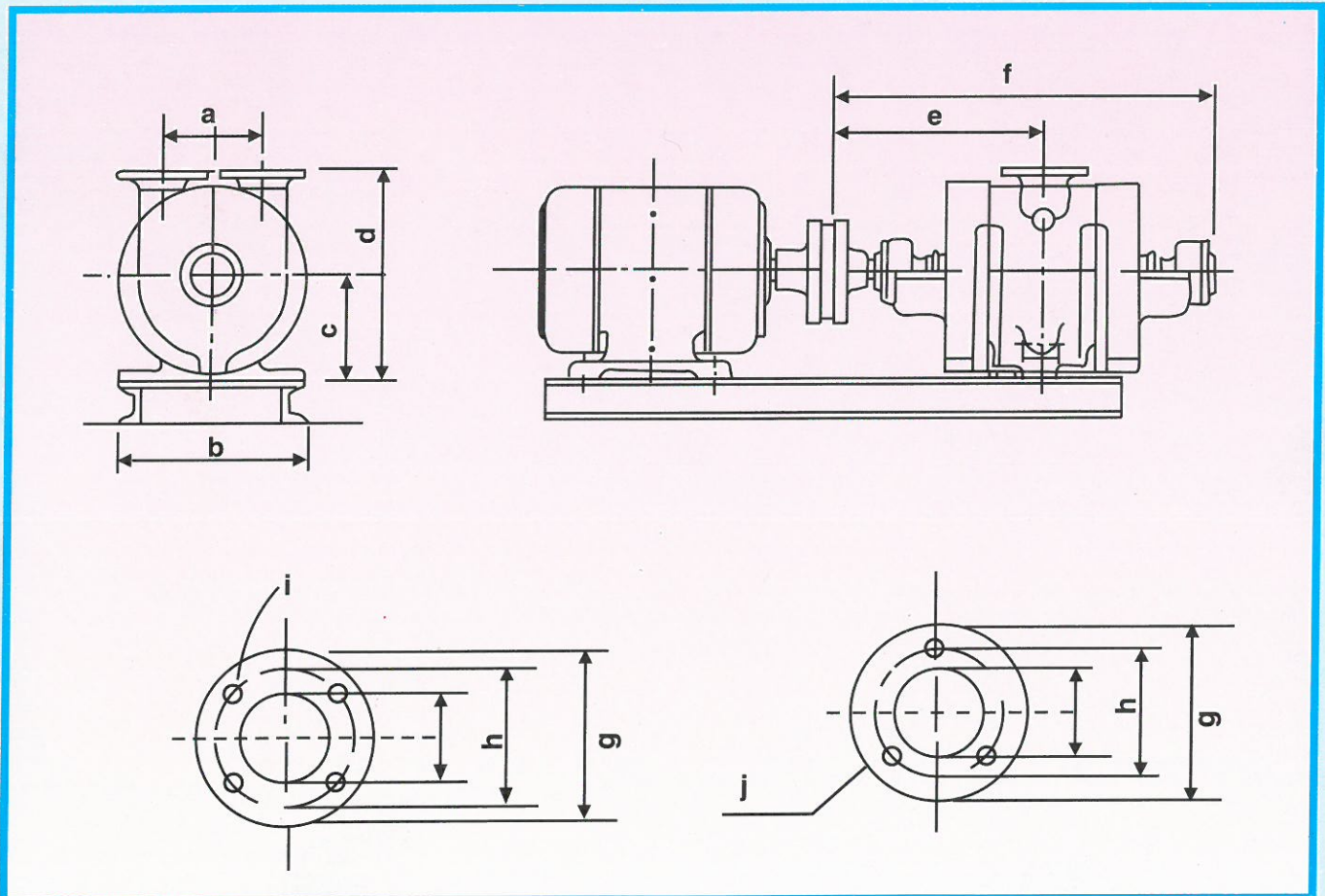
1. Motor
2. Coupling
3. Leather Link
4. Vacuum Pump
5. Vacuum Gauge
6. Automatic Drain Valve
7. Silencer

### No. Description

8. Silencer Bend
9. Air Cock for High Vacuum
10. Base Frame
11. Matching Flange
12. Ball Valve/Wheel Valve
13. Stop Cock
14. Foundation Bolts

TYPE RV/RK.	SUCTION CAPACITY CMH	RECOMMENDED MOTOR HP	SPEED RPM	WATER CONSUMPTION LT/MIN	a	b	c	d	e	f	g	h	l	j	flg	Appx. Wt. Bare Machine. Kg.
RV 1	50	3	2850	7	130	315	120	245	223	364	75	56	25	M 10	1	34
RV 2	80	5	2850	10	130	315	120	270	220	410	110	82	32	4x14	2	42
RV 3	120	7.5	2850	14	130	315	120	270	240	450	110	82	40	4x14	2	50
RV 4	160	7.5	1450	15	200	440	220	440	343	630	150	120	60	4x15	2	170
RV 5	220	10	1450	20	200	440	220	440	360	665	150	120	60	4x15	2	185
RV 6	330	15	1450	30	200	440	220	440	419	760	190	150	80	4x18	2	220
RV 7	440	20	1450	40	200	440	220	440	454	830	190	150	80	4x18	2	245
RV 8	720	30	980	60	290	650	320	650	495	895	240	200	125	8x18	2	495
RV 9	845	35	980	80	290	650	320	650	525	955	240	200	125	8x18	2	515
RV 10	1080	40	980	100	290	650	320	650	565	1035	240	200	125	8x18	2	530
RV 11	1500	65	725	150	380	840	410	840	625	1130	320	280	200	8x18	2	910
RV 12	2025	90	725	200	380	850	410	840	700	1280	320	280	200	8x18	2	1080

- ◆ Horse power figures are for vacuum pumps. For compressors HP details will be given on request.
- ◆ Maximum pressure for liquid ring compressors-1.5 Kg/CM<sup>2</sup> with single stage M/C & 3 Kg/CM<sup>2</sup> in two stage M/C.
- ◆ Maximum vacuum by liquid ring vacuum pump-710 MM of HG. With Liquid at 30°C and barometer at 760 mm of HG.
- ◆ Dimensions and specifications are approximate and subject to change.
- ◆ Guaranteed vacuum upto 710 mm Hg at close suction.
- ◆ Higher vacuum can be achieved by using chilled water as seal medium.
- ◆ Suction capacity mentioned is at open suction.



## *Special Features*

- ◆ This Type of M/Cs are used mainly as vacuum pump but can also be used as compressor
- ◆ Simple and trouble free operation
- ◆ Moist Air, aggressive gases, vapours and dust laden gases can be handled.
- ◆ No metallic contact inside machine, no wear & tear,
- ◆ no lubrication.
- ◆ Oil Free Exhaust
- ◆ No contamination of medium passing through.
- ◆ Compression takes place with small temperature rise.
- ◆ Compact unit due to direct drive.
- ◆ Simple construction & easy maintenance.

## *Application*

- ◆ Filtration
  - ◆ Condensor Exhausting
  - ◆ Moisture Extracting
  - ◆ Priming
  - ◆ Deaeration
  - ◆ Solvent Recovery
  - ◆ Evaporation
  - ◆ Distillation
  - ◆ Pneumatic Conveying
  - ◆ Dredging Installations.
- 
- ◆ We also manufacture centrifugal process pumps in s-s for Dairy, pharmaceuticals & Food Processing Industries.
  - ◆ Horizontal back pull out centrifugal pumps for paper industries.
  - ◆ 1 HP Vacuum Pump for Laboratory



## **RAVI INDUSTRIES**

95, Adarsh Co-op. Ind. Estate, Opp. Gravity House,  
Rakhial, Ahmedabad-380 023.  
Phone : (079) 274 7012, 274 7033  
Fax : 079-274 4682